



Salisbury Cruise Club presents

# Discover Japan by Bullet Train

featuring Tokyo, Kyoto, & Osaka

**BOOKING  
DISCOUNT!**

Save \$200 Per Person  
\$400 Per Couple\*

12 Days

April 22, 2027

Booking #: 220525 (Web Code)

**NO RISK DEPOSIT  
NO CHANGE FEES**

Book Now and your Deposit is Risk Free with  
No Change Fees until Final Payment Due Date!  
See back for details\*\*



**TOUR RATES:**

Booking Discount\*: **\$9599** pp double

Regular Rate: **\$9799** pp double

Single Supplement: +\$1000

\*See Reservation Info for Booking Discount details



# Discover Japan by Bullet Train

## DAY 1: DEPART USA

Today board your overnight flight bound for Tokyo, Japan.

## DAY 2: ARRIVE TOKYO, JAPAN

Arrive in Tokyo, the dynamic and dazzling capital of Japan. Meet your Tour Manager and transfer to your hotel for a 3-night stay in Tokyo. Tonight enjoy a Welcome Dinner at a local restaurant with your fellow travelers.

🚫 (D) Overnight: **Tokyo**

## DAY 3: TOKYO SIGHTSEEING

Today enjoy a Tokyo City Tour. Visit the Imperial Palace Plaza, home to the Emperor and other members of the Japanese Royal Family since 1868, when Emperor Meiji transferred the seat of power from Kyoto to Edo and changed the name of the city to Tokyo. Explore the beautiful East Garden of the palace for its seasonal flowers, moats and guardhouses. Later visit Asakusa, a district reminiscent of Tokyo's past decades and home to the Sensō-ji Buddhist Temple, Tokyo's oldest temple site. Enjoy a hands-on Sushi Making Experience for lunch. Then visit the iconic & historic Tsukiji Fish Market and the Odaiba, a vibrant shopping & entertainment district on the Tokyo Bay.

🚫 (B,L,D) Overnight: **Tokyo**

## DAY 4: TOKYO - HAKONE - TOKYO

Today enjoy a scenic day trip to Mt. Fuji & Hakone. Mount Fuji, Japan's most iconic peak is famous for its snow-capped slopes and is a UNESCO World Heritage site. Enjoy the Hakone Ropeway, a scenic aerial lift that takes you to a station offering stunning views of Mt. Fuji, Lake Ashi and the Owakudani Valley. Then enjoy a scenic Lake Ashi

Cruise. The crater lake was formed 3000 years ago when the Hakone volcano last erupted. Today Mt. Fuji sits in the background for spectacular views from the lake on a clear day. Lunch is included at a local restaurant. Later this afternoon return to Tokyo and enjoy the evening at leisure. Please note Mt. Fuji views are weather permitting.

🚫 (B,L) Overnight: **Tokyo**

## DAY 5: TOKYO - BULLET TRAIN - KYOTO

Today experience the Shinkansen Bullet Train from Tokyo to Kyoto. Japanese Bullet Trains, or Shinkansen, are famous for their speed, safety, and punctuality. They operate on a network of high-speed lines reaching speeds of up to 200 mph and often arrive within seconds of their scheduled time. During your train ride a traditional Bento Lunch (box) is included. Arrive in Kyoto, the former imperial capital of Japan for over one-thousand years. Enjoy a Tea Ceremony before settling into your hotel for a three night stay. While in Kyoto, immerse yourself in Japan's unique culture. Enjoy a bit of leisure time to explore on your own before dinner with your fellow travelers.

🚫 (B,L,D) Overnight: **Kyoto**

## DAY 6: KYOTO SIGHTSEEING

Explore timeless beauty during your Kyoto City Tour. Visit the historic and scenic Arashiyama Bamboo Grove, renowned for its cherry trees and stunning landscapes that change dramatically with each season. Enjoy a leisurely walk through the towering bamboo groves and see the iconic Togetsukyo Bridge. Visit the Kinkakuji Temple, also known as the Golden Pavilion, a Zen Temple whose top two floors are covered in gold leaf, and see the historic Heian Shrine with its towering red

torii gate. Stop at the Nishiki Market, a historic and lively food market known to locals as "Kyoto's Kitchen" to explore Kyoto's culinary delights. This evening enjoy a Cultural Dinner & Geisha Show at a local venue where Maiko (apprentice Geisha) perform.

🚫 (B,D) Overnight: **Kyoto**

## DAY 7: KYOTO - NARA - KYOTO

Today visit Nara, the first permanent capital city of Japan with rich history and culture. Take a stroll in Nara Park, home to hundreds of friendly roaming deer. Visit the landmark Todaiji Temple, one of the powerful Seven Great Temples and home to one of Japan's largest bronze statues of Buddha. This afternoon, return to Kyoto and enjoy a Sake Tasting Experience in the Fushimi District, renowned for its traditional breweries. Enjoy the evening at your own pace.

🚫 (B) Overnight: **Kyoto\*\***

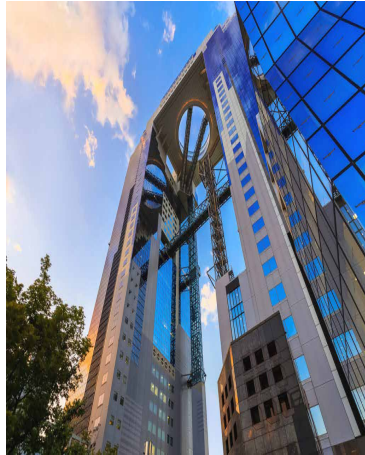
## DAY 8: KYOTO - BULLET TRAIN - OSAKA

This morning board a Bullet Train from Kyoto to Himeji. Upon arrival visit the hilltop Himeji Castle, a UNESCO World Heritage Site and a National Treasure of Japan, representing the pinnacle of Japanese castle architecture. Continue to Osaka, check in for a two night stay and enjoy the rest of the evening at your own pace. Osaka features a vibrant food scene, often referred to as the "Kitchen of Japan".

🚫 (B) Overnight: **Osaka\*\***

## DAY 9: OSAKA SIGHTSEEING

Today enjoy an Osaka City Tour. Begin with a walk through the Dotonbori, a vibrant entertainment district known for its dazzling neon lights, street food, and bustling atmosphere along the Dotonbori Canal. Then visit the Osaka Castle, a large castle built in 1583 by Toyotomi Hideyoshi, a great unifier & ruler. The castle was rebuilt in 1931



and features a museum, garden, shrine, park and sports facilities. Later visit the incredible Umeda Sky Building and admire the panoramic views of Osaka from the Floating Garden Observatory – an open-air viewing platform straddling the two 40-story towers of the iconic building.

✕ (B) Overnight: **Osaka**

**DAY 10: OSAKA - LEISURE DAY**

Today is at leisure to explore Osaka at your own pace. Perhaps visit Kuromon Ichiba Market, a lively covered food market known as “Osaka’s Kitchen,” offering fresh seafood, wagyu beef, fruit, and local street food. Alternatively, explore Shinsaibashi Shopping Arcade, one of Osaka’s largest shopping streets, filled with boutiques, department stores, cafés, and souvenir shops. Another option is to visit the Shinsekai District and Tsutenkaku Tower, a nostalgic neighborhood with retro charm, famous for kushikatsu (fried skewers) and panoramic views from Tsutenkaku Tower.

✕ (B) Overnight: **Osaka**

**DAY 11: OSAKA - LEISURE DAY**

Today you have another day at leisure to enjoy Osaka before flying home. Perhaps visit Osaka Aquarium Kaiyukan, one of the largest aquariums in the world, showcasing marine life from the Pacific Rim, including whale sharks. Another option is to see Shitennoji Temple, one of Japan’s oldest Buddhist temples, originally founded in the 6th century. This evening, enjoy a farewell dinner with your fellow travelers.

✕ (B,D) Overnight: **Osaka**

**DAY 12: OSAKA - FLY HOME**

Today fly home with wonderful memories of your experiences and time in Japan.

✕ (B)

**Luggage Notes:**

\*\*Main luggage is not transported via the Bullet Trains. A small overnight bag like a backpack will be necessary for the evenings of Day 7 & Day 10. Main luggage will be transported via motorcoach and not available until the next day on these 2 evenings. Baggage handling is not available at all hotels in Japan. Suitcase with wheels is highly recommended for your main luggage.

**Air Note:**

For own air guests & PWD Hotel Transfers, Tokyo-Haneda (HND) is the primary gateway to fly into & Osaka (KIX) for return flights. Some groups with PWD air may fly to Tokyo-Narita (NRT).

**TOUR ACTIVITY LEVEL**

Easy **1** **2** **3** **4** Active



**TRAVEL AND SAVE!**

The Premier Compass Club rewards our valued guests with special recognition and a Compass Club Loyalty Credit on future tours and cruises.

Guests that have completed a trip will automatically be enrolled and will receive an additional \$100 per person or \$200 per couple Compass Club Loyalty Credit applied to their next Premier World Discovery tour or River Cruise. Loyalty Credit is valid for 24 months from your last tour.

For more details and information visit: [premierworlddiscovery.com](http://premierworlddiscovery.com)

**TOUR HIGHLIGHTS**

- ▶ Three Bullet Train Experiences - Tokyo to Kyoto, Kyoto to Himeji to Osaka
- ▶ 3-Nights in Tokyo & Kyoto
- ▶ 4-Nights in Osaka
- ▶ 5 Culinary Experiences - Sushi Making Experience, Cultural Dinner & Geisha Show, Sake Tasting Experience, Bento Lunch On-board Train & Tea Ceremony
- ▶ Tokyo City Tour w/ Imperial Palace & East Gardens
- ▶ Tsukiji Fish Market & Odaiba Complex
- ▶ Hakone Ropeway & Mt. Fuji Day Trip
- ▶ Lake Ashi Cruise
- ▶ Kyoto City Tour with Arashiyama Bamboo Grove
- ▶ Kinkakuji Temple & the Heian Shrine
- ▶ Nara Park & Todaiji Temple
- ▶ Nishiki Market
- ▶ Himeji Castle
- ▶ Osaka City Tour with Dotonbori District
- ▶ Osaka Castle & Umeda Sky Building

**INCLUSIONS**

- ▶ Roundtrip Airfare - IAD
- ▶ Int’l Air Departure Taxes/Fuel
- ▶ 18 Meals: 10-Breakfasts, 3-Lunches & 5-Dinners
- ▶ Professional Tour Director
- ▶ Motorcoach Transportation
- ▶ Sightseeing & Admissions per Itinerary
- ▶ Baggage Handling at Hotels\*\* (limited--see Luggage Notes)
- ▶ Hotel Transfers

**ACCOMMODATIONS**

- ▶ 3-Nights - Premier Hotel Cabin President, Tokyo
- ▶ 3-Nights - Doubletree by Hilton Kyoto Station, Kyoto
- ▶ 4-Nights - Miyako City Osaka Hommachi or Hotel Monterey La Soeur, Osaka

On some dates alternative hotels may be used



**TOUR RATES:**

Booking Discount\*: **\$9599** pp double

Regular Rate: **\$9799** pp double

Single Supplement: **+\$1000**

\*See Reservation Info for Booking Discount details

RESERVATION FORM (INTL)

Discover Japan by Bullet Train

April 22, 2027

BOOKING # 220525

Contact Information/Mail Reservation Form to:
Salisbury Cruise Club • Attn: Kelly Shannahan
3911 Fivee Friars Road
Salisbury, MD 21804
410.546.1237
salisburycruiseclub@gmail.com

Make checks payable to: PREMIER WORLD DISCOVERY

Enclosed please find a deposit in the amount of \$ \_\_\_\_\_ (\$600 per person)
to secure reservations for \_\_\_\_\_ # of people.

Premier's Travel Protection Plan (TPP): [ ] Yes, I (we) wish to purchase travel protection (TPP)
(TPP must be purchased with initial deposit)
[ ] No, I (we) decline travel protection (TPP)

Enclosed please find payment in the amount of \$ \_\_\_\_\_ (\$725 per person) to secure
Premier's Travel Protection Plan (TPP).

TOTAL PAYMENT \$ \_\_\_\_\_

DEPARTURE AIRPORT \_\_\_\_\_ ROOMMATE'S DEPARTURE AIRPORT \_\_\_\_\_
see flyer for included group departure airport/departure city, additional charges apply for other airport packages

To avoid change fees, submit full legal names (first/mid/last) exactly as they appear on the
government issued ID used for travel (PASSPORT)

Passport Name: \_\_\_\_\_
First Name(s) Middle Name(s) Last Name(s)
Passport does not include middle name(s) [ ]

DOB (MM/DD/YY) \_\_\_\_\_ Gender [ ] M [ ] F

Passport #: \_\_\_\_\_ Exp. Date:(MM/DD/YY) \_\_\_\_\_

Country of Issuance \_\_\_\_\_

Street Address \_\_\_\_\_ [ ] Check if Roommate's address is the
same

City \_\_\_\_\_ State \_\_\_\_\_ ZIP \_\_\_\_\_

Email address \_\_\_\_\_

Mobile Phone# \_\_\_\_\_

Emergency Contact/Tel# \_\_\_\_\_

Notes or TSA/KTN #: \_\_\_\_\_

Roommate's Passport Name: \_\_\_\_\_
First Name(s) Middle Name(s) Last Name(s)
Passport does not include middle name(s) [ ]

DOB (MM/DD/YY) \_\_\_\_\_ Gender [ ] M [ ] F

Passport #: \_\_\_\_\_ Exp. Date:(MM/DD/YY) \_\_\_\_\_

Country of Issuance \_\_\_\_\_



Cardholder Name (If paying by credit card) \_\_\_\_\_

Credit Card # \_\_\_\_\_ Exp Date: \_\_\_\_\_

CVV# \_\_\_\_\_ Amount to be charged \$ \_\_\_\_\_

Credit Card Billing Address: [ ] Check if address is the same as above

Address \_\_\_\_\_ City \_\_\_\_\_

State \_\_\_\_\_ ZIP \_\_\_\_\_ Tel# \_\_\_\_\_

Sign \_\_\_\_\_ Date \_\_\_\_\_

SIGNATURE REQUIRED (for credit card use & acceptance of terms\*)

DEPOSIT & FINAL PAYMENT

Deposit of \$600 per person is due with Reservation Form to secure
reservations. Reservations are taken on a first come, first served basis. Final
Payment Due Date is 90 days prior to departure.

\*BOOKING DISCOUNT

Make your Final Payment by check prior to the Final Payment Due Date
& receive \$400 per couple/\$200 per person Booking Discount!

•Initial Deposit can be made by check or credit card to be eligible.

•Payments after Initial Deposit are considered part of Final Payment & must
be made by check. Land Only Packages receive \$200 per couple/\$100pp BD.

ONLINE BOOKING OPTION

Save time, postage & secure your seat for this group departure. Simply type
https://res.premierworlddiscovery.com into your web browser & use the
Booking Number (Web Code) from this flyer to make your Deposit online in
just a few minutes. No need to submit a Reservation Form if booking online.

PREMIER'S TRAVEL PROTECTION PLAN (TPP) - \$725 per person
(must purchase with Initial Deposit)

Part A - Cancellation Waiver provided by PWD

I. Trip Cancellation Waiver (TCW) - Guarantees full refund on all payments,
except the Trip Cancellation Waiver Fee itself in case of cancellation up to
the time and date of departure due to the passenger's personal illness or
death of an immediate family member. Medical/official documentation re-
quired.

II. Premier "Any Reason" Cancellation Waiver (ARCW) - Reimburses 75% of
the cancellation fees in the form of a future travel credit certificate (FTCC)
valid for 1 year, if you cancel more than 48 hours prior to scheduled de-
parture for any reason not eligible for cash refund under the TCW (Part A
- I). FTCC is non-transferable, may not be redeemed for cash and does not
include any credit for the Trip Cancellation Waiver Fee. The Trip Cancell-
ation Waiver Fee must be paid for with Initial Deposit and is refundable until
180 days prior to departure. The Trip Cancellation Waiver does not cover
any single supplement charges due to an individual's traveling companion
canceling prior to departure. The Trip Cancellation Waiver is non-transf-
erable and valid for each applicant only. The Trip Cancellation Waiver does
not cover any services such as airline tickets not purchased through PWD.
Cancellations, Refunds & Inquiries under Part A will be handled by PWD.
Certain Exclusions and Restrictions apply.

Part B - Post Departure Travel Protection Plan\* provided by USI

Includes coverage for: Trip Interruption (\$1,000); Trip Delay (\$100/Day-Max
\$500); Baggage & Personal Effects (\$2,000); Baggage Delay (\$500); Emer-
gency Accident/Sickness Medical Expense - excess coverage (\$30,000);
Emergency Evacuation/Repatriation (\$150,000); Accidental Death & Dis-
memberment (\$25,000); Non-Insurance and Emergency Travel Assistance
Services\*\* (24/7). Claims & Inquiries under Part B will be administered by USI.

For full Part A and Part B plan details visit: premierworlddiscovery.com/TPP
Information described on this page are for general information basis only.
There are certain restrictions, exclusions and limitation that apply to all in-
surance coverages. Plan benefits, limits and provisions may vary by state
jurisdiction.

\*\*NO RISK DEPOSIT - NO CHANGE FEES

Deposits & TPP payments for any Bookings made for this tour are fully
refundable until 180 days prior to departure. Should your plans change
inside of 180 days you can use the full value (Future Travel Credit\*\*) of your
Deposit or TPP on a different program as long as you change plans or let us
know prior to the Final Payment Due Date.

\*\*FTC's are valid for 12 mos from dep date & non-transferable.

CANCELLATION FEES\*\*

Cancellations not covered by the Travel Protection Plan (TPP) or if the TPP is
not purchased, are subject to the following per person fees:

- Cancel more than 180 days prior to departure: Full Refund
- Cancel 179-90 days prior to departure: Deposit or TPP\* is Retained\*\*
- Cancel 89-60 days prior to departure: 25% of total price
- Cancel 59-30 days prior to departure: 50% of total price
- Cancel 29-15 days prior to departure: 75% of total price
- Cancel 14 days or less prior to departure/no shows: No refunds
\*If purchased \*\*Future Travel Credit issued for Deposit or TPP\* value

RESPONSIBILITY

World Tours LLC dba Premier World Discovery ("PWD") acts solely as an
independent intermediary for travelers, using independent, third-party
suppliers to arrange for all travel services and products in connection with
your tour, including without limitation, transportation, accommodations,
cruises, activities, and other travel products and services. All such services
are provided by independent third-party suppliers and are not owned,
managed, or controlled by PWD. PWD and its affiliates, owners, employees,
and representatives assume no responsibility or liability for any act, omission,
delay, change in schedule, event, loss, damage, inconvenience, missed travel
product/service, or personal injury resulting from the actions, omissions or
negligence of you, or any supplier or third party, or for circumstances beyond
PWD's direct control. Your travel is also subject to the terms and conditions
of suppliers (e.g., a contract for air transportation), which are between you
and the suppliers. PWD and/or its tour director reserves the right, in their
sole discretion, for any reason, to decline or require the withdrawal of any
participant from a tour or service. All claims or disputes related to travel
services or these terms must be resolved in California court under California
law. Payment of deposit constitutes acceptance of these conditions. CST
#2163560-20

AIR NOTE/SEAT REQUESTS/AIRLINE BAG FEES:

Air Schedules may not be available until Final Trip Documentation is received.
Airline baggage fees & seat assignment fees are not included in tour rates.
Many airlines do not provide advance seat assignments until check-in at the
airport. If specific seat requests or airline choice is extremely important to
your reservation, we recommend you book land only and make your own air
reservations. Please make this adjustment to land only/own air at time of tour
reservation.

IMPORTANT CONDITIONS/NOTES:

A valid US passport is required for this tour and is the responsibility of each
passenger. Passports should be valid for at least six (6) months beyond the
travel dates. Itinerary & Hotels are subject to change.

